



Gill Tailor

◆ THE ART OF BESPOKE ◆

Contents

Basic Guideline before Measuring.....	1
Measure Regulation of Overcoat.....	2
Chest.....	2
Stomach.....	3
Seat.....	4
Bicep.....	5
Sleeve.....	6
Back Length.....	7
Shoulder.....	8
Front Length.....	9
First Button Stance.....	10
Lapel Width.....	12



Basic Guideline before Measuring

To ensure the measurements are precise, please pay attention to the following tips:

1. Put the garment on the table or floor and make sure it is flat and smooth without any wrinkle before measuring.
2. Please follow our regulation strictly for each item to guarantee the finished garment made by us is exactly the same as your original one.

If you have any question or meet any special situation when you are taking the measurement, please free feel to contact our customer representative directly.



Measure Regulation of Overcoat



1. Chest: Keep the overcoat flat without any wrinkle, fasten up the upper buttons and leave last one open, if it's a double breast overcoat, then fasten all the buttons. Measure horizontally at the bottom of armhole, and twice of this measurement is finished chest.

Measure Regulation of Overcoat



2. Stomach: Measure horizontally at the narrowest part of waist (3.15 inch ~3.94 inch above center top edge of bottom pockets), twice of this measurement is finished stomach.

Measure Regulation of Overcoat



3.Seat: Refer to the below chart, and find out seat placement based on stomach & height. Measure horizontally from left to right, twice of this measurement is finished seat. If it's a side vent overcoat, the vent needs to be overlapped 2.36 inch for both sides.

Reference chart for the distance between stomach and seat

Height/inch	51~53	54~57	58~60	61~63	64~67
Distance between stomach and seat	6.3	6.7	7	7.5	7.9
Height/inch	68~70	71~73	74~77	78~	
Distance between stomach and seat	8.3	8.7	9	9.4	

Measure Regulation of Overcoat



4. Bicep: Keep the sleeve flat, measure horizontally from the bottom of armhole vertically down to the opposite side, twice of this measurement is finished bicep.

Measure Regulation of Overcoat



5. Sleeve length: Put the overcoat on a model or hang up with a hanger. Measure from shoulder point to the center opening edge of cuff.

Measure Regulation of Overcoat



6. Back length: Put the overcoat on a model or hang up with a hanger. Measure vertically from top of back central seam to the hem of overcoat.

Measure Regulation of Overcoat



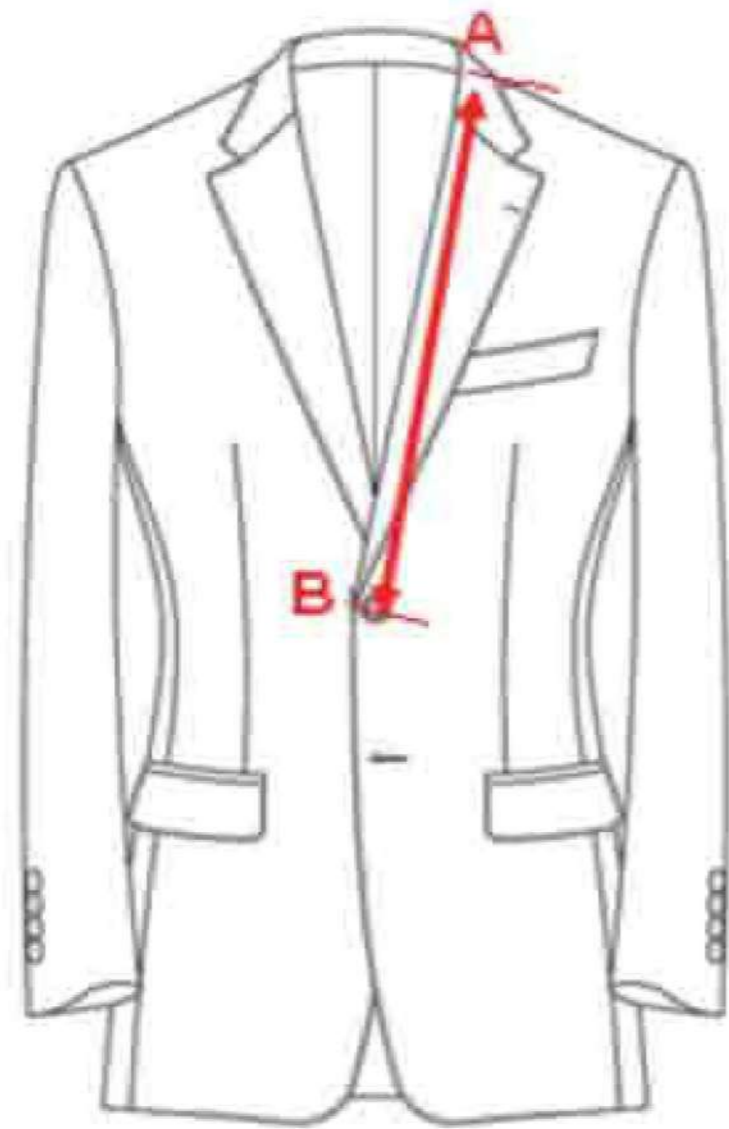
7. Shoulder: Put the overcoat on a model or hang up with a hanger. Measure from left shoulder point, across 0.4 inch below top of back central seam to right shoulder point.

Measure Regulation of Overcoat



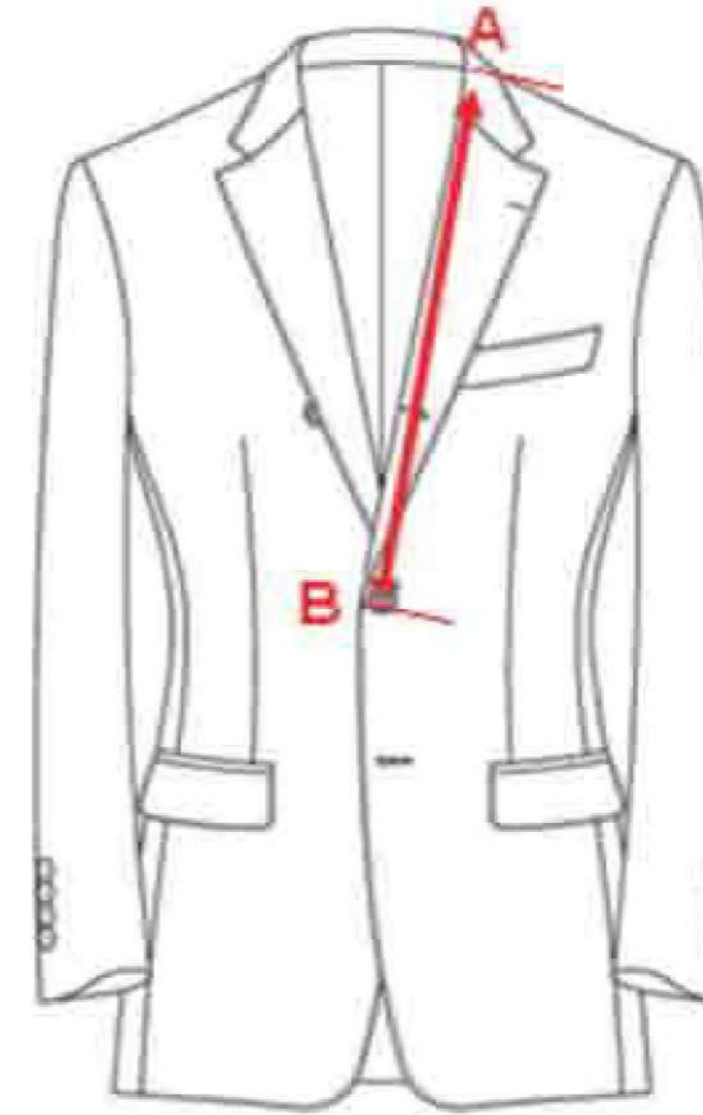
1. Front length: Measure vertically from the neck shoulder point to the hem of overcoat.

Measure Regulation of Overcoat



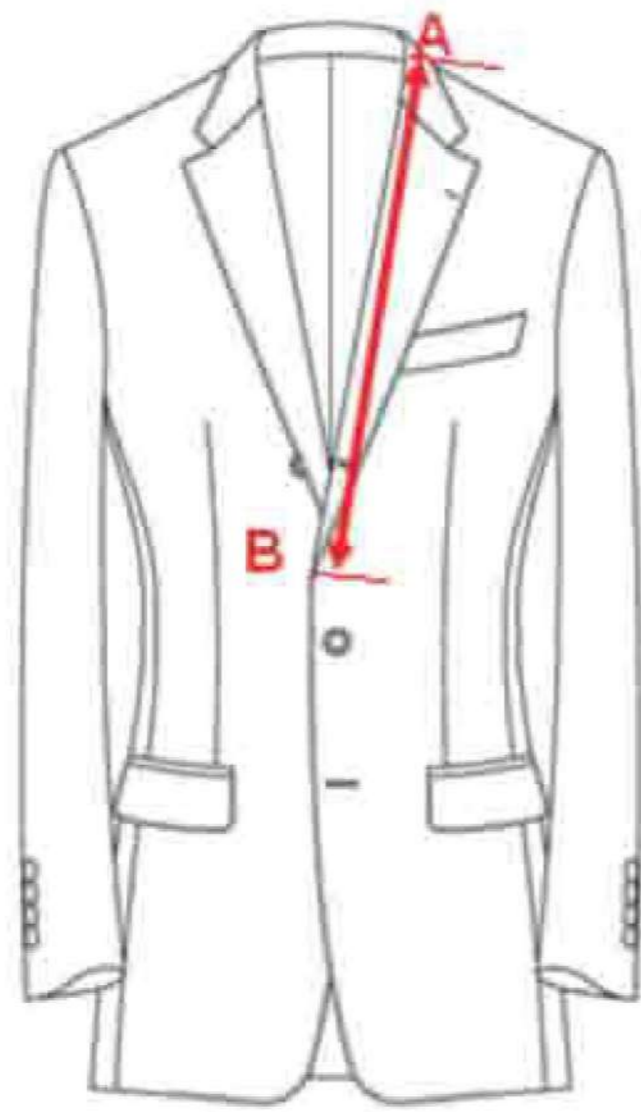
2. First Button Stance

1) Lapel folded point at first button
(picture 1): Measure from neck shoulder point(A) to lapel folded point (B)

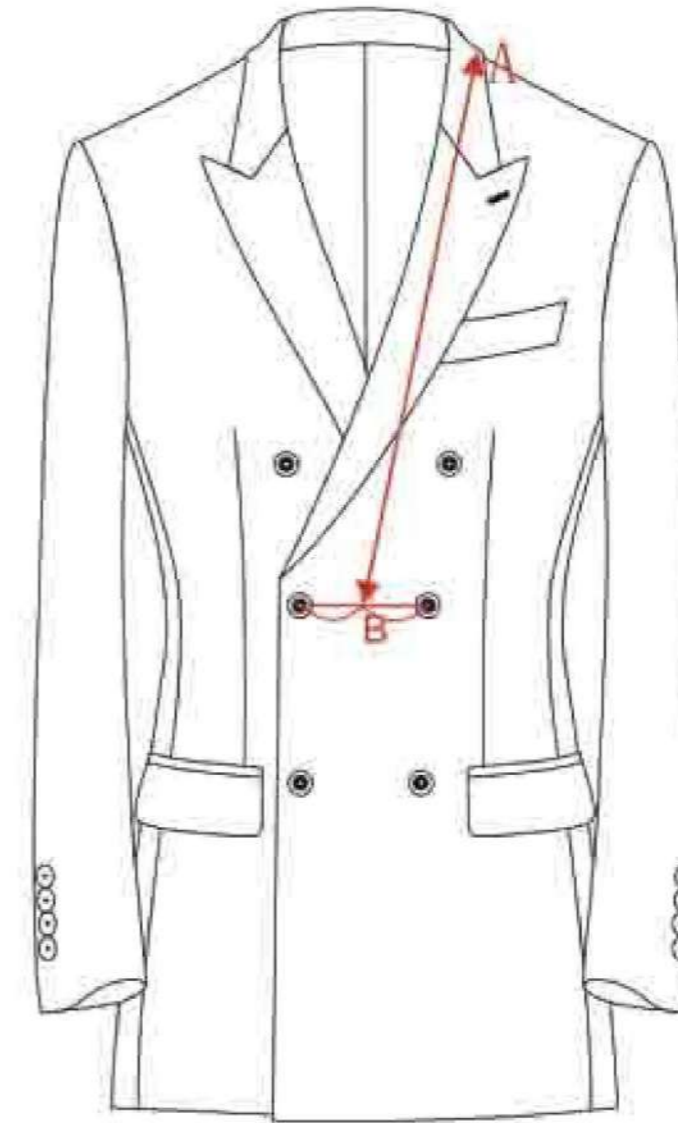


2) Lapel folded point at second button
(picture 2): Measure from neck shoulder point(A) to lapel folded point (B)

Measure Regulation of Overcoat

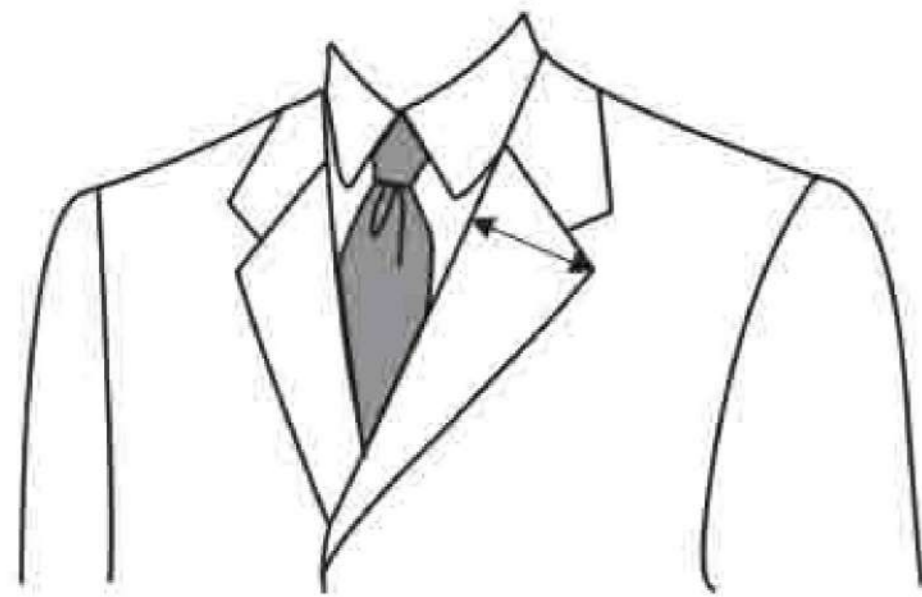


3) Lapel folded point at the center of first button and second button (picture 3):
Measure from neck shoulder point(A) to lapel folded point (B)



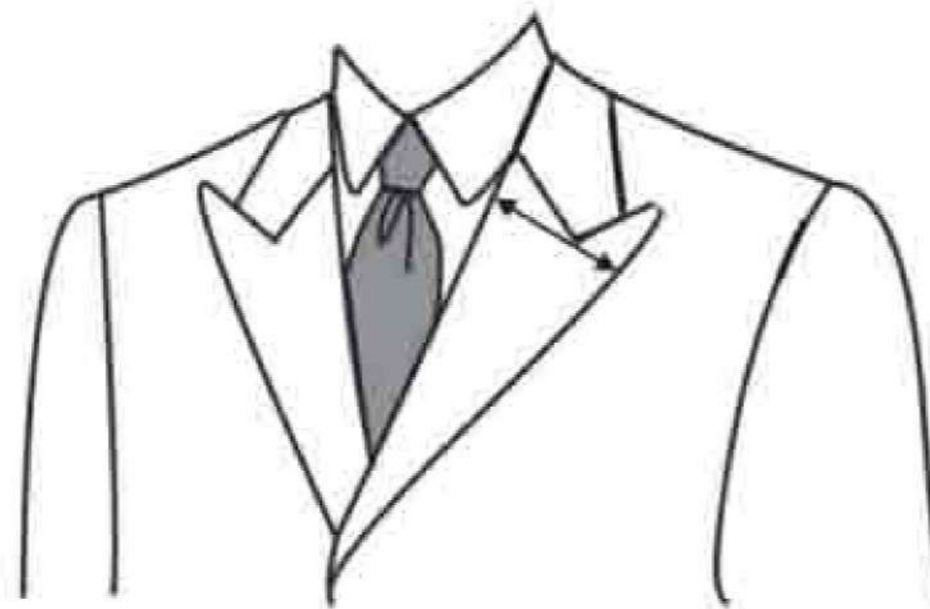
4) Double breast overcoat (picture 4):
Measure from neck shoulder point(A) to the center of 2 buttons near the lapel folded point(B)

Measure Regulation of Overcoat

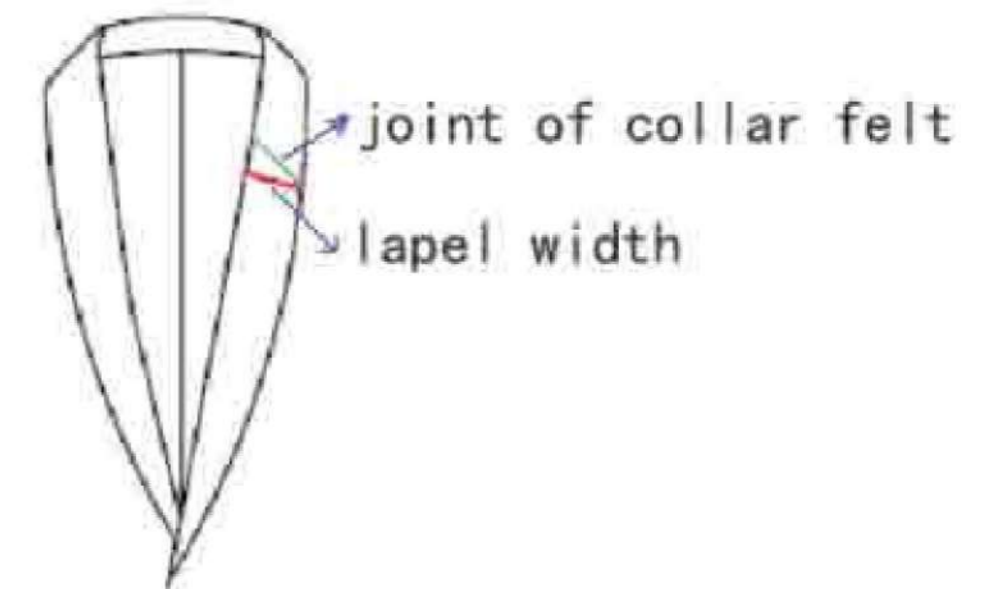


3. Lapel Width

1) Notch lapel: Measure vertically from the corner of lapel to the folded edge.



2) Peak lapel: Measure across the pit of lapel vertically down to the folded edge.



3) Shawl collar: Measure from joint of collar felt vertically to lapel folded edge.